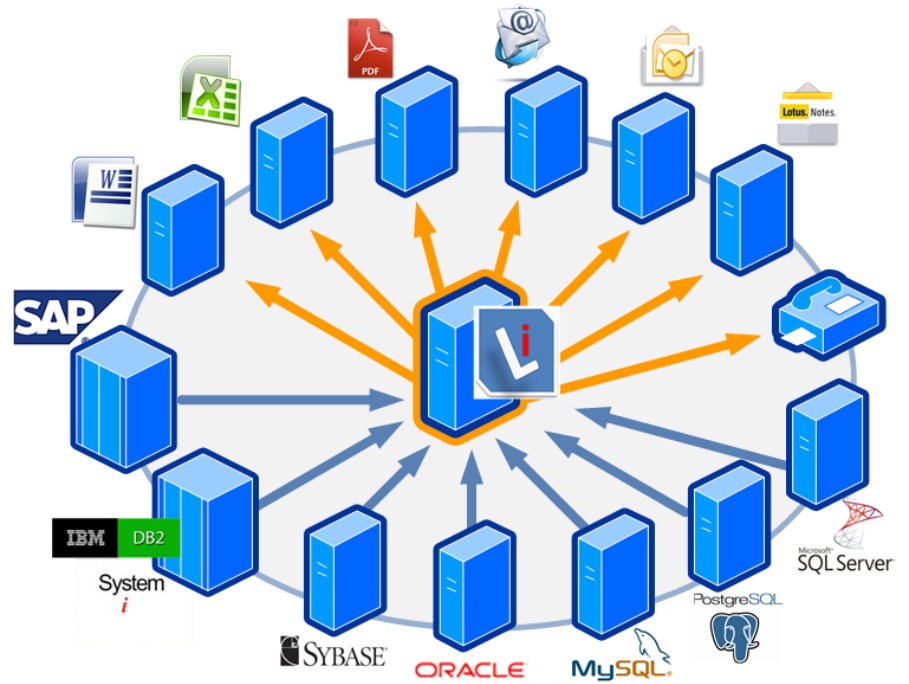


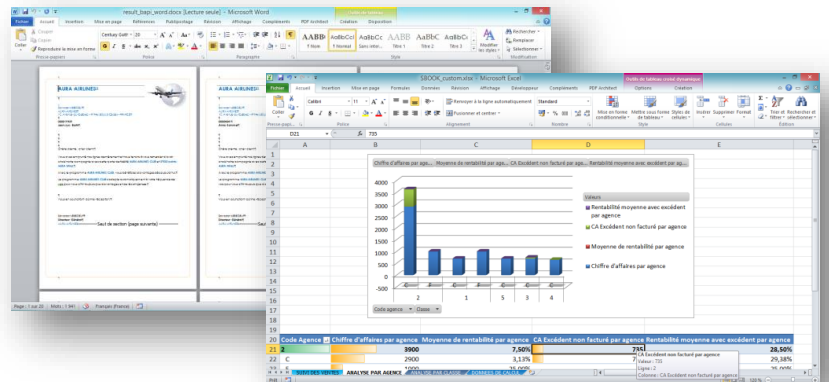
LAUNCHER/i is the server software dedicated to managing document flows from your applications, RDBMS and systems: it allows you to define, design, and manage entire document flow processes. With **LAUNCHER/i**, you perform in real-time extraction, filtering, organizing, editing, customizing of your information and routing of the created documents.



LAUNCHER/i makes it easier to collect, organize, add graphical enhancements, distribute and disseminate information, especially to electronic document management systems, printers, and business applications. With **LAUNCHER/i** services, you can optimize the value of your ERP, business applications, RDBMS and systems by offering users access to strategic information and improving their document flow management. **LAUNCHER/i** helps you improve supply management, invoicing, purchasing, accounting human resources, and shipping productivity for your business.

BENEFITS

- ✓ Optimization of document presentation and distribution channels.
- ✓ Easy installation and customization using familiar formats.
- ✓ Centralized processing, multichannel distribution and document archiving.
- ✓ Reduction of costs, repetitive tasks, and printing due to process automation and document distribution.
- ✓ Data security, confidentiality and compliance.



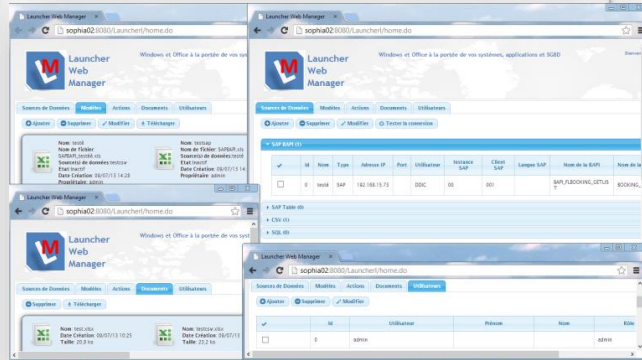
The highest level of customization and formatting control is available, allowing, for example, the contents of a cell in Excel or the color of a font to be changed, or a VBA instruction to be executed. The documents can then be broadcast to company and outside. **LAUNCHER/i** can also activate, automate, and control Windows applications remotely. You remain in control of background and interactive processes at all times and easily schedule data exporting, document generation, activation of Windows applications, and email sending.

FEATURES

- Connectivity: SAP® ECC – R/3, SAP® Netweaver, Oracle, DB2, PostgreSQL, Microsoft SQL Server, MySQL, Sybase, IBM i.
- Generate and display Word, PDF, Excel and HTML documents.
- Use standard and advanced Excel functions: create files, insert data, read, change, and calculate values on the fly, name results, etc.
- Use standard and advanced Word and PDF functions: insert watermarks, concatenate, merge, overlay documents, change properties, etc.
- Enhance all document types with images, graphics, control panels, bar codes, overlays, etc.
- Provide extended direct mail and mass printing functions.
- Route outgoing documents via multiple channels.
- Compose and send email via SMTP, Outlook, Lotus Notes and fax.
- Schedule processes and archive processed documents.
- Web Management through Launcher Web Manager.
- Call functions via programmatic interface or command mode.
- Launch Windows commands and executables remotely.
- Bidirectionally transfer documents between IFS and shared Windows directories.

SPECIFICATIONS

- Compatibility: SAP® ECC 6.0, SAP® Netweaver 7.0, OS/400 V4R5 and higher, Windows XP to 8, 32 and 64 bits.
- RDBMS: Oracle, DB2, PostgreSQL, Microsoft SQL Server, MySQL, Sybase.
- Email: Lotus Notes, Outlook, SMTP.
- Compatible with Windows TSE and CITRIX.
- ASCII and Unicode support.
- Fax Virtual Printers.
- Microsoft Office Compatibility: Microsoft Office from 2002 to 2013.
- Programming interfaces: Java on Windows, CL, RPG, COBOL on IBM i.
- Web container for Launcher Web Manager: Tomcat 7.



LAUNCHER WEB MANAGER

In addition to API that guarantee perfect integration of Launcher/i in your applications, Web Launcher Manager is dedicated to the technical, functional managers and users in order to:

- ✓ Identify data sources and extraction queries.
- ✓ Manage users profiles and roles.
- ✓ Organize and maintain Office templates.
- ✓ Generate and classify Office documents.

Launcher Web Manager is a Web application easily scalable and customizable by our integrators, at your disposal for adaptations you should need.

Want to learn more? Contact us:

Phone +33 1 56 81 28 70
Fax +33 1 56 81 90 22
Mail info@easycom-aura.com

About AURA Equipements

Market leader with its flagship product, Easycom®, AURA Equipements designs and markets middleware, output management and reporting platforms for more than 4,000 clients worldwide.

The solutions developed by AURA Equipements ensure close collaboration and perfect synergy between the client/server, Internet, or mobile applications running IBM i, Windows, Microsoft Office, Linux, or Unix.

